

BRAUNSCHWEIG-WOLFSBURG
RNAV (GPS) RWY 26
EGNOS CH 99971 E26A

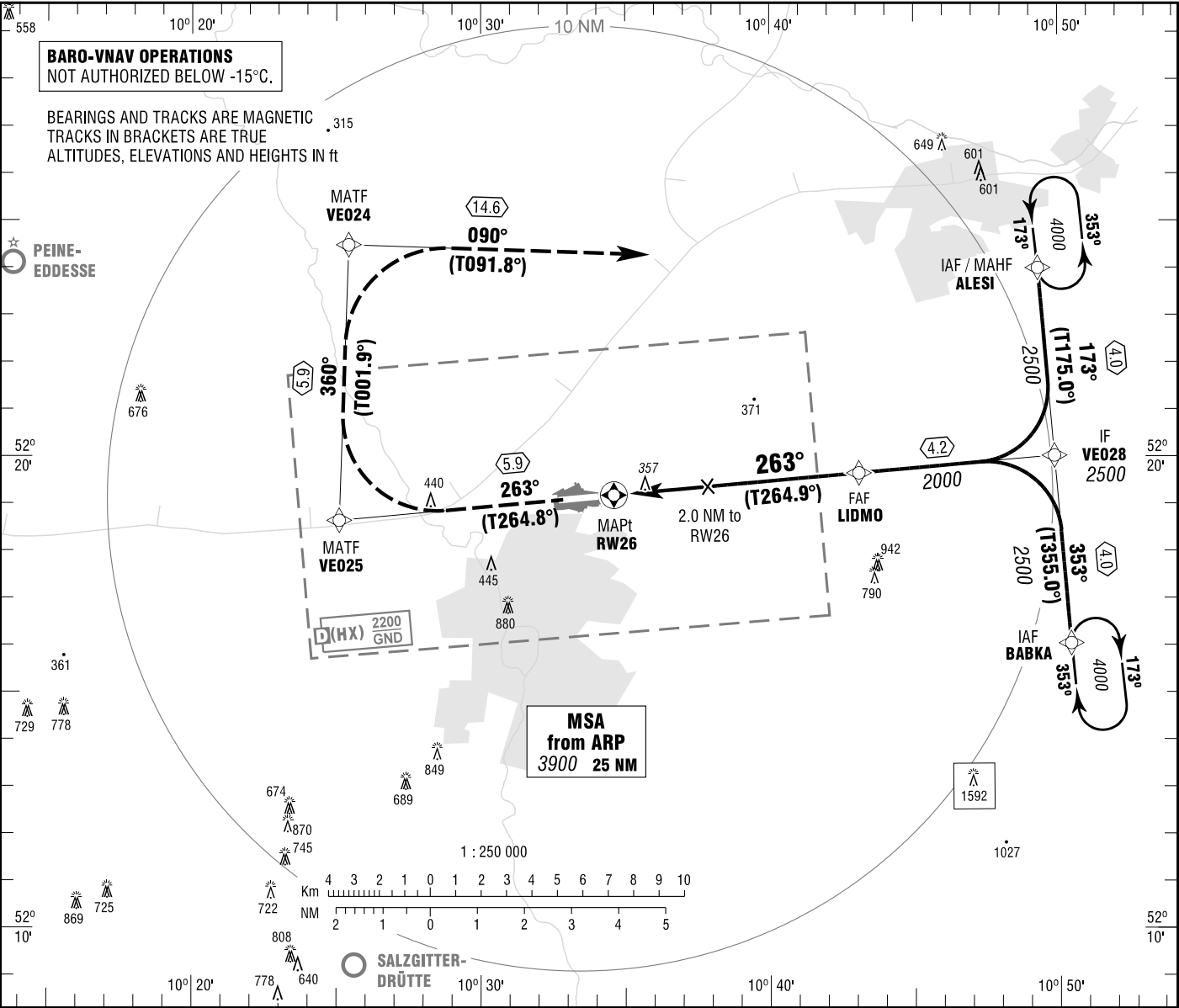
BREMEN RADAR
BRAUNSCHWEIG TOWER

131.325
120.050
369.025

ELEV 295
OCH RELATED TO
THR 26 ELEV 288

VAR 2° E

INSTRUMENT
APPROACH
CHART - ICAO



MISSED APPROACH PROCEDURE
Climb on track 263° to VE025, RT, on track 360° to VE024,
RT, on track 090° to ALESI climbing to 4000.

VE025 [R] - VE024 [R] - ALESI [A4000]

(LNAV only)
2.0 NM to
RW26

MAPt
RW26

FAF
LIDMO

from
IF VE028
2000

5.2 NM to
RW26

288

980

263°
(T264.9°)

TCH 54

PROFILE SCALE 1 : 250 000

OCA (OCH)	A	B	C	D
LNAV	670 (390)	670 (390)	670 (390)	670 (390)
LNAV / VNAV	590 (300)	610 (320)	610 (320)	610 (320)
LPV	670 (390)	670 (390)	670 (390)	670 (390)

DIST THR / RW26	1	2	3	4	5			
ALTITUDE	670	980	1300	1620	1940			

Timing not authorized for defining the MAPt.

GS	kt	80	100	120	140	160	180
LIDMO - RW26 (5.2 NM)	MIN:SEC	3:54	3:07	2:36	2:14	1:57	1:44
Rate of descent (5.2%)	ft / MIN	420	530	640	740	850	960

Correction: MSA, missed apch, obstacles revised, OCA(H) obstacles & values.